

The powerful plasma solution

Powerful discharge

600 W or 1000 W per plasma head

Energy Discharge Control EDC

Pulse operation enables process-orientated adaptation of power and temperature

Space saving construction

Small space requirement due to compact plasma head design

Multiple connections available

I/O interface and BUS system (e.g. PROFIBUS or PROFINET) available

High treatment speed

High Plasma dose allows high production speed

Easy integration

Simple integration into existing production lines

Wide range of materials

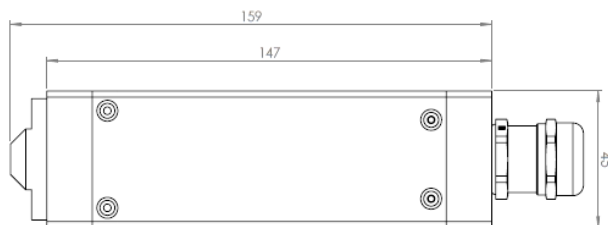
Wide range of applications for conductive and non-conductive materials

Optimized for coating

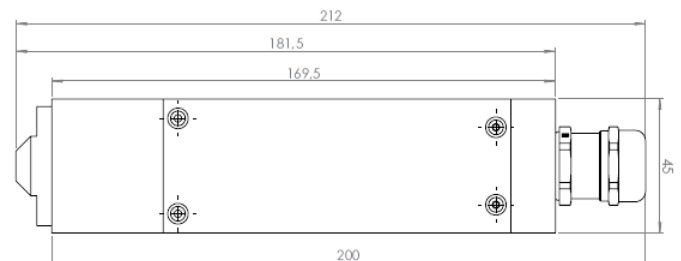
Optimized for surface coatings

Plasma head	CAT600	CAT1000
Treatment width ¹⁾ per nozzle form, focus and slot	up to 18 mm (focus) up to 25 mm (slot)	up to 18 mm (focus) up to 30 mm (slot)
Working distance ²⁾	For both plasma tools, focus : 3 – 20 mm, slot : 2 – 5 mm	
Sizes (H/B/T) approx. in mm	159/45/22	182/45/22
Weight approx.	700 g	850 g
Power	600 W	1000 W
Supply cable ³⁾	For both plasma tools, 2 m or 4 m (with external Transformer)	
Compressed air, 6 bar	40 l/min	55 l/min

Depending on the application:¹⁾ material, ²⁾ treatment speed, ³⁾ working distance
³⁾ bending radius: 100 mm



CAT600



CAT1000

We would be pleased to send you drawings and CAD dates.